



Getting help for overactive bladder
**An easy way to talk
to your doctor**

Take this with you to your doctor.
Start a conversation.
Get the help you need.

ONCE-DAILY
 **Detrol[®] LA**
*tolterodine tartrate
extended release capsules*

#1 PRESCRIBED BRAND*

Around 33 million Americans have overactive bladder (OAB). Yet many miss out on a treatment that may help reduce symptoms like strong, sudden urges to go.

That's why it's important to **be clear with your doctor about both your symptoms and their effect on you**. When you're clear, your doctor can give you the best diagnosis and treatment if needed.

Your answers to the questions in this brochure will help your doctor understand what you're going through. Take this guide with you next time you visit your doctor. And use the examples on page 7 to help you get the relief you deserve.

Getting Results

Don't be afraid to tell your doctor what's on your mind. Try not to skip information even if it seems personal. Write down any questions you have and take them to your appointment.



- 2 Please see accompanying important product information.*

First: Tell your doctor about your symptoms.

- Sometimes I have strong, sudden urges to urinate.
- Sometimes I worry that I won't make it to the bathroom in time.
- I go to the bathroom more than 8 times in 24 hours (which may include waking up at night to go).

How many times a day? _____

Yes No

If you answered “yes” to **any** of these questions, you may have OAB.

Your answers on the following pages will help your doctor understand how OAB affects your daily life. Take your answers to your doctor and ask if DETROL LA can help you.

You should not take once-daily DETROL LA if you have certain types of stomach problems, glaucoma, or if you have trouble passing urine.



Some people with OAB symptoms put off talking to their doctors. They try to deal with OAB on their own. Or think that it's "just a part of aging." But it's not.

OAB can add a lot of stress in your life, even beyond the symptoms you feel in your body. Answering the questions to the right can help your doctor see how OAB affects you.

Remember, **OAB is not normal at any age.** It's not inevitable. OAB is a treatable medical condition. And DETROL LA may help.

Getting Results

Some people find it helps to make a list before they see their doctor. Think about writing down:

- How often you urinate in a day.
- How much you go each time.
- What you were doing at the time.



4 *Please see accompanying important product information.*

Second: Be sure to tell your doctor how OAB affects your life.

- | | Yes | No |
|--|--------------------------|--------------------------|
| ○ Sometimes my urge to go is so strong, I'm scared that I won't make it to the bathroom in time. | <input type="checkbox"/> | <input type="checkbox"/> |
| ○ Sometimes I won't go places because I'm not sure if a bathroom will be easy to find. | <input type="checkbox"/> | <input type="checkbox"/> |
| ○ I often look for a bathroom first when I enter a new place. | <input type="checkbox"/> | <input type="checkbox"/> |
| ○ I try to limit fluids so I go less often. | <input type="checkbox"/> | <input type="checkbox"/> |
| ○ I sometimes wear pads to avoid embarrassment. | <input type="checkbox"/> | <input type="checkbox"/> |
| ○ I worry that other people get upset with my frequent trips to the bathroom. | <input type="checkbox"/> | <input type="checkbox"/> |

If you answered “yes” to **any** of these questions, tell your doctor how your bladder problem is affecting you.

Please go to the next page. You'll find ideas on how to discuss OAB with your doctor.

When your doctor sees how it affects you, you can get the help you deserve.

Being clear when you talk to your doctor is the best way to get help. To make your conversation easier, refer to the talking points on the next page. They may help you describe what you've been feeling.

My next appointment:

Doctor: _____

Date: _____

Time: _____

DETROL LA is generally well tolerated. The most common side effect is dry mouth. Other side effects may include headache, constipation, and abdominal pain.

Getting Results

Remember that you and your doctor are a team. Work together to get the best results. If you don't understand something, ask. Your doctor wants you to be comfortable.



6 *Please see accompanying important product information.*

Finally: Have the best talk you can with your doctor to get the relief you need.

Talking points:

What's going on

- I'm having a real problem with running to the bathroom all the time.
- It's interfering with my life.
- I'm tired during the day because sometimes my sleep is interrupted..
- I filled out this questionnaire, and I'd like you to look at my answers.

How you feel about it

- Sometimes I'm afraid I'll have an accident.
- I can't control this and it upsets me.
- It's embarrassing and makes me uncomfortable.

You'd like help

- I need help with this.

Ask your doctor if DETROL LA is right for you.



Questions?
Call the toll-free Patient Support Line
at 1-866-494-6400.
Or go to www.DetrolLA.com.



*Please see accompanying important
product information.*

The information provided in this brochure cannot replace your doctor's advice. Only your doctor can assess the benefits and risks to decide if DETROL LA is right for you.

*Source: IMS Health National Prescription Audit (NPA), based on total prescriptions in August 2003.

DD194898D ©2004 Pfizer Inc. All rights reserved. Printed in USA/June 2004



N22866

HIGHLIGHTS OF PRESCRIBING INFORMATION

These highlights do not include all the information needed to use Detrol® LA safely and effectively. See full prescribing information for Detrol LA.

Detrol® LA (tolterodine tartrate extended release capsules)

For oral administration

Initial U.S. Approval: December 2000

INDICATIONS AND USAGE

Detrol LA is an antimuscarinic indicated for the treatment of overactive bladder with symptoms of urge urinary incontinence, urgency, and frequency. (1)

DOSAGE AND ADMINISTRATION

- 4 mg capsules taken orally once daily with water and swallowed whole. (2.1)
- 2 mg capsules taken orally once daily with water and swallowed whole in the presence of:
 - mild to moderate hepatic impairment (Child-Pugh class A or B) (2.2)
 - severe renal impairment [Creatinine Clearance (CCr) 10-30 mL/min] (2.2)
 - drugs that are potent CYP3A4 inhibitors. (2.2)
- DETROL LA is not recommended for use in patients with CCr <10 mL/min. (2.2)
- Detrol LA is not recommended for use in patients with severe hepatic impairment (Child-Pugh Class C) (2.2)

DOSAGE FORMS AND STRENGTHS

- Capsules: 2 mg and 4 mg (3)

CONTRAINDICATIONS

- Urinary retention (4)
- Gastric retention (4)
- Uncontrolled narrow-angle glaucoma (4)

WARNINGS AND PRECAUTIONS

- Urinary Retention: use caution in patients with clinically significant bladder outflow obstruction because of the risk of urinary retention. (5.1)
- Gastrointestinal Disorders: use caution in patients with gastrointestinal obstructive disorders or decreased gastrointestinal motility because of the risk of gastric retention. (5.2)
- Controlled Narrow-Angle Glaucoma: use caution in patients being treated for narrow-angle glaucoma. (5.3)

- Myasthenia Gravis: use caution in patients with myasthenia gravis. (5.6)
- QT Prolongation: Consider observations from the thorough QT study in clinical decisions to prescribe DETROL LA to patients with a known history of QT prolongation or to patients who are taking Class IA (e.g., quinidine, procainamide) or Class III (e.g., amiodarone, sotalol) antiarrhythmic medications (5.7)

ADVERSE REACTIONS

The most common adverse reactions (incidence \geq 4% and >placebo) were dry mouth, headache, constipation and abdominal pain. (6.1)

To report SUSPECTED ADVERSE REACTIONS, contact Pfizer Inc. at 1-800-438-1985 or FDA at 1-800-FDA-1088 or www.fda.gov/medwatch.

DRUG INTERACTIONS

- Potent CYP3A4 inhibitors: Co-administration may increase systemic exposure to DETROL LA. Reduce DETROL LA dose to 2 mg once daily. (7.2)
- Other Anticholinergics (antimuscarinics): Concomitant use with other anticholinergic agents may increase the frequency and/or severity of dry mouth, constipation, blurred vision and other anticholinergic pharmacological effects. (7.6)

USE IN SPECIFIC POPULATIONS

- **Pregnancy and Lactation:** DETROL LA should be used during pregnancy only if the potential benefit for the mother justifies the potential risk to the fetus. DETROL LA should not be administered during nursing. (8.1, 8.3)
- **Pediatric Use:** Efficacy in the pediatric population has not been demonstrated. Safety information from a study of a total of 710 pediatric patients (486 on DETROL LA, 224 on placebo) is available. (8.4)
- **Renal Impairment:** DETROL LA is not recommended for use in patients with CCr <10 mL/min. Dose adjustment in severe renal impairment (CCr: 10-30 mL/min). (8.6)
- **Hepatic Impairment:** Not recommended for use in severe hepatic impairment (Child Pugh Class C). Dose adjustment in mild to moderate hepatic impairment (Child Pugh Class A, B). (8.7)

See 17 for PATIENT COUNSELING INFORMATION and FDA-approved patient labeling

Revised: [12/2009]

FULL PRESCRIBING INFORMATION: CONTENTS*

1 INDICATIONS AND USAGE

2 DOSAGE AND ADMINISTRATION

- 2.1 Dosing Information
- 2.2 Dosage Adjustment in Specific Populations
- 2.3 Dosage Adjustment in Presence of Concomitant Drugs

3 DOSAGE FORMS AND STRENGTHS

4 CONTRAINDICATIONS

5 WARNINGS AND PRECAUTIONS

- 5.1 Urinary Retention
- 5.2 Gastrointestinal Disorders
- 5.3 Controlled Narrow-Angle Glaucoma
- 5.4 Hepatic Impairment
- 5.5 Renal Impairment
- 5.6 Myasthenia Gravis
- 5.7 Use in Patients with Congenital or Acquired QT Prolongation

6 ADVERSE REACTIONS

- 6.1 Clinical Trials Experience
- 6.2 Post-marketing Experience

7 DRUG INTERACTIONS

- 7.1 Potent CYP2D6 Inhibitors
- 7.2 Potent CYP3A4 Inhibitors
- 7.3 Other interactions
- 7.4 Other drugs metabolized by cytochrome p450 isoenzymes
- 7.5 Drug-Laboratory-Test Interactions
- 7.6 Other Anticholinergics

8 USE IN SPECIFIC POPULATIONS

- 8.1 Pregnancy
- 8.3 Nursing Mothers
- 8.4 Pediatric Use
- 8.5 Geriatric Use
- 8.6 Renal Impairment
- 8.7 Hepatic Impairment
- 8.8 Gender
- 8.9 Race

10 OVERDOSAGE

11 DESCRIPTION

12 CLINICAL PHARMACOLOGY

- 12.1 Mechanism of Action
- 12.2 Pharmacodynamics
- 12.3 Pharmacokinetics

13 NONCLINICAL TOXICOLOGY

- 13.1 Carcinogenesis, Mutagenesis, Impairment of Fertility

14 CLINICAL STUDIES

16 HOW SUPPLIED/STORAGE AND HANDLING

17 PATIENT COUNSELING INFORMATION

- 17.1 Information for Patients
- 17.2 FDA Approved Patient Labeling

*Sections or subsections omitted from the full prescribing information are not listed.

FULL PRESCRIBING INFORMATION

1 INDICATIONS AND USAGE

DETROL LA Capsules is indicated for the treatment of overactive bladder with symptoms of urge urinary incontinence, urgency, and frequency [see **CLINICAL STUDIES** (14)].

2 DOSAGE AND ADMINISTRATION

2.1 Dosing Information

The recommended dose of DETROL LA Capsules is 4 mg once daily with water and swallowed whole. The dose may be lowered to 2 mg daily based on individual response and tolerability; however, limited efficacy data are available for DETROL LA 2 mg [see **CLINICAL STUDIES** (14)].

2.2 Dosage Adjustment in Specific Populations

For patients with mild to moderate hepatic impairment (Child-Pugh Class A or B) or severe renal impairment (CCr 10 - 30 mL/min), the recommended dose of DETROL LA is 2 mg once daily. DETROL LA is not recommended for use in patients with severe hepatic impairment (Child-Pugh Class C). Patients with CCr<10 mL/min have not been studied and use of DETROL LA in this population is not recommended [see **WARNINGS AND PRECAUTIONS** (5.4), **USE IN SPECIFIC POPULATIONS** (8.6, 8.7)].

2.3 Dosage Adjustment in Presence of Concomitant Drugs

For patients who are taking drugs that are potent inhibitors of CYP3A4 [e.g. ketoconazole, clarithromycin, ritonavir], the recommended dose of DETROL LA is 2 mg once daily [see **DRUG INTERACTIONS** (7.2)].

3 DOSAGE FORMS AND STRENGTHS

The 2 mg capsules are blue-green with symbol and 2 printed in white ink. The 4 mg capsules are blue with symbol and 4 printed in white ink.

4 CONTRAINDICATIONS

- urinary retention
- gastric retention
- uncontrolled narrow-angle glaucoma

[see **WARNINGS AND PRECAUTIONS** (5.1), (5.3)].

5 WARNINGS AND PRECAUTIONS

5.1 Urinary Retention

Administer DETROL LA Capsules with caution to patients with clinically significant bladder outflow obstruction because of the risk of urinary retention. [see **CONTRAINDICATIONS** (4)].

5.2 Gastrointestinal Disorders

Administer DETROL LA with caution in patients with gastrointestinal obstructive disorders because of the risk of gastric retention. DETROL LA, like other antimuscarinic drugs, may decrease gastrointestinal motility and should be used with caution in patients with conditions associated with decreased gastrointestinal motility (e.g. intestinal atony) [see **CONTRAINDICATIONS** (4)].

5.3 Controlled Narrow-Angle Glaucoma

Administer DETROL LA with caution in patients being treated for narrow-angle glaucoma [see **CONTRAINDICATIONS** (4)].

5.4 Hepatic Impairment

The clearance of orally administered tolterodine immediate release was substantially lower in cirrhotic patients than in the healthy volunteers. For patients with mild to moderate hepatic impairment (Child-Pugh Class A or B), the recommended dose for DETROL LA is 2 mg once daily. DETROL LA is not recommended for use in patients with severe hepatic impairment (Child-Pugh Class C) [see **DOSAGE AND ADMINISTRATION (2.2)** and **USE IN SPECIFIC POPULATIONS (8.6)**].

5.5 Renal Impairment

Renal impairment can significantly alter the disposition of tolterodine and its metabolites. The dose of DETROL LA should be reduced to 2 mg once daily in patients with severe renal impairment (CCr: 10-30 mL/min). Patients with CCr<10 mL/min have not been studied and use of DETROL LA in this population is not recommended [see **DOSAGE AND ADMINISTRATION (2.2)**, and **USE IN SPECIFIC POPULATIONS (8.7)**].

5.6 Myasthenia Gravis

Administer DETROL LA with caution in patients with myasthenia gravis, a disease characterized by decreased cholinergic activity at the neuromuscular junction.

5.7 Use in Patients with Congenital or Acquired QT Prolongation

In a study of the effect of tolterodine immediate release tablets on the QT interval [see **CLINICAL PHARMACOLOGY (12.2)**] the effect on the QT interval appeared greater for 8 mg/day (two times the therapeutic dose) compared to 4 mg/day and was more pronounced in CYP2D6 poor metabolizers (PM) than extensive metabolizers (EMs). The effect of tolterodine 8 mg/day was not as large as that observed after four days of therapeutic dosing with the active control moxifloxacin. However, the confidence intervals overlapped.

These observations should be considered in clinical decisions to prescribe DETROL LA to patients with a known history of QT prolongation or to patients who are taking Class IA (e.g., quinidine, procainamide) or Class III (e.g., amiodarone, sotalol) antiarrhythmic medications. There has been no association of Torsade de Pointes in the international post-marketing experience with DETROL or DETROL LA.

6 ADVERSE REACTIONS

Because clinical trials are conducted under widely varying conditions, adverse reaction rates observed in the clinical trials of a drug cannot be directly compared to rates in the clinical trials of another drug and may not reflect the rates observed in practice.

6.1 Clinical Trials Experience

The efficacy and safety of DETROL LA Capsules was evaluated in 1073 patients (537 assigned to DETROL LA; 536 assigned to placebo) who were treated with 2, 4, 6, or 8 mg/day for up to 15 months. These include a total of 1012 patients (505 randomized to DETROL LA 4 mg once daily and 507 randomized to placebo) enrolled in a randomized, placebo-controlled, double-blind, 12-week clinical efficacy and safety study.

Adverse events were reported in 52% (n=263) of patients receiving DETROL LA and in 49% (n=247) of patients receiving placebo. The most common adverse events reported by patients receiving DETROL LA were dry mouth, headache, constipation, and abdominal pain. Dry mouth was the most frequently reported adverse event for patients treated with DETROL LA occurring in 23.4% of patients treated with DETROL LA and 7.7% of placebo-treated patients. Dry mouth, constipation, abnormal vision (accommodation abnormalities), urinary retention, and dry eyes are expected side effects of antimuscarinic agents. A serious adverse event was reported by 1.4% (n=7) of patients receiving DETROL LA and by 3.6% (n=18) of patients receiving placebo.

Table 1 lists the adverse events, regardless of causality, that were reported in the randomized, double-blind, placebo-controlled 12-week study at an incidence greater than placebo and in greater than or equal to 1% of patients treated with DETROL LA 4 mg once daily.

Table 1. Incidence* (%) of Adverse Events Exceeding Placebo Rate and Reported in ≥1% of Patients Treated with DETROL LA (4 mg daily) in a 12-week, Phase 3 Clinical Trial

Body System	Adverse Event	% DETROL LA n=505	% Placebo n=507
Autonomic Nervous	dry mouth	23	8
General	headache	6	5
	fatigue	2	1
Central/Peripheral Nervous	dizziness	2	1
Gastrointestinal	constipation	6	4
	abdominal pain	4	2
	dyspepsia	3	1
Vision	xerophthalmia	3	2
	vision abnormal	1	0
Psychiatric	somnolence	3	2
	anxiety	1	0
Respiratory	sinusitis	2	1
Urinary	dysuria	1	0

* in nearest integer.

The frequency of discontinuation due to adverse events was highest during the first 4 weeks of treatment. Similar percentages of patients treated with DETROL LA or placebo discontinued treatment due to adverse events. Dry mouth was the most common adverse event leading to treatment discontinuation among patients receiving DETROL LA [n=12 (2.4%) vs. placebo n=6 (1.2%)].

6.2 Post-marketing Experience

The following events have been reported in association with tolterodine use in worldwide post-marketing experience:

General: anaphylactoid reactions, including angioedema; **Cardiovascular:** tachycardia, palpitations, peripheral edema; **Gastrointestinal:** diarrhea; **Central/Peripheral Nervous:** confusion, disorientation, memory impairment, hallucinations.

Reports of aggravation of symptoms of dementia (e.g., confusion, disorientation, delusion) have been reported after tolterodine therapy was initiated in patients taking cholinesterase inhibitors for the treatment of dementia.

Because these spontaneously reported events are from the worldwide post-marketing experience, the frequency of events and the role of tolterodine in their causation cannot be reliably determined.

7 DRUG INTERACTIONS

7.1 Potent CYP2D6 Inhibitors

Fluoxetine, a potent inhibitor of CYP2D6 activity, significantly inhibited the metabolism of tolterodine immediate release in CYP2D6 extensive metabolizers, resulting in a 4.8-fold increase in tolterodine AUC. There was a 52% decrease in C_{max} and a 20% decrease in AUC of 5-hydroxymethyl tolterodine (5-HMT), the pharmacologically active metabolite of tolterodine [see **CLINICAL PHARMACOLOGY (12.1)**]. The sums of unbound serum concentrations of tolterodine and 5-HMT are only 25% higher during the interaction. No dose adjustment is required when tolterodine and fluoxetine are co-administered [see **CLINICAL PHARMACOLOGY (12.3)**].

7.2 Potent CYP3A4 Inhibitors

Ketoconazole (200 mg daily), a potent CYP3A4 inhibitor, increased the mean C_{max} and AUC of tolterodine by 2- and 2.5-fold, respectively in CYP2D6 poor metabolizers.

For patients receiving ketoconazole or other potent CYP3A4 inhibitors such as itraconazole, clarithromycin or ritonavir, the recommended dose of DETROL LA is 2 mg once daily [see **DOSAGE AND ADMINISTRATION (2.2)**, **CLINICAL PHARMACOLOGY (12.3)**].

7.3 Other interactions

No clinically relevant interactions have been observed when tolterodine was co-administered with warfarin, with a combined oral contraceptive drug containing ethinyl estradiol and levonorgestrel, or with diuretics [see **CLINICAL PHARMACOLOGY (12.3)**].

7.4 Other drugs metabolized by Cytochrome P450 Isoenzymes

In vivo drug-interaction data show that tolterodine immediate release does not result in clinically relevant inhibition of CYP1A2, 2D6, 2C9, 2C19, or 3A4 as evidenced by lack of influence on the marker drugs caffeine, debrisoquine, S-warfarin, and omeprazole [see **CLINICAL PHARMACOLOGY (12.3)**].

7.5 Drug-Laboratory-Test Interactions

Interactions between tolterodine and laboratory tests have not been studied.

7.6 Other Anticholinergics

The concomitant use of DETROL LA with other anticholinergic (antimuscarinic) agents may increase the frequency and/or severity of dry mouth, constipation, blurred vision, somnolence and other anticholinergic pharmacological effects.

8 USE IN SPECIFIC POPULATIONS

8.1 Pregnancy

Pregnancy Category C.

At approximately 9-12 times the clinical exposure to the pharmacologically active components of DETROL[®] LA, no anomalies or malformations were observed in mice (based on the AUC of tolterodine and its 5-HMT metabolite at a dose of 20 mg/kg/day). At 14-18 times the exposure (doses of 30 to 40 mg/kg/day) in mice, tolterodine has been shown to be embryolethal and reduce fetal weight, and increase the incidence of fetal abnormalities (cleft palate, digital abnormalities, intra-abdominal hemorrhage, and various skeletal abnormalities, primarily reduced ossification). Pregnant rabbits treated subcutaneously at about 0.3 - 2.5 times the clinical exposure (dose of 0.8 mg/kg/day) did not show any embryotoxicity or teratogenicity. There are no studies of tolterodine in pregnant women. Therefore, DETROL LA should be used during pregnancy only if the potential benefit for the mother justifies the potential risk to the fetus.

8.3 Nursing Mothers

Tolterodine is excreted into the milk in mice. Offspring of female mice treated with tolterodine 20 mg/kg/day during the lactation period had slightly reduced body weight gain. The offspring regained the weight during the maturation phase.

It is not known whether tolterodine is excreted in human milk; therefore, DETROL LA should not be administered during nursing. A decision should be made whether to discontinue nursing or to discontinue DETROL LA in nursing mothers.

8.4 Pediatric Use

Efficacy in the pediatric population has not been demonstrated.

The pharmacokinetics of tolterodine extended release capsules have been evaluated in pediatric patients ranging in age from 11–15 years. The dose-plasma concentration relationship was linear over the range of doses assessed. Parent/metabolite ratios differed according to CYP2D6 metabolizer status [see **CLINICAL PHARMACOLOGY (12.3)**]. CYP2D6 extensive metabolizers had low serum concentrations of tolterodine and high concentrations of the active metabolite 5-HMT, while poor metabolizers had high concentrations of tolterodine and negligible active metabolite concentrations.

A total of 710 pediatric patients (486 on DETROL LA, 224 on placebo) aged 5–10 with urinary frequency and urge incontinence were studied in two randomized, placebo-controlled, double-blind, 12-week studies. The percentage of patients with urinary tract infections was higher in patients treated with DETROL LA (6.6%) compared to patients who received placebo (4.5%). Aggressive, abnormal and hyperactive behavior and attention disorders occurred in 2.9% of children treated with DETROL LA compared to 0.9% of children treated with placebo.

8.5 Geriatric Use

No overall differences in safety were observed between the older and younger patients treated with tolterodine.

In multiple-dose studies in which tolterodine immediate release 4 mg (2 mg bid) was administered, serum concentrations of tolterodine and of 5-HMT were similar in healthy elderly volunteers (aged 64 through 80 years) and healthy young volunteers (aged less than 40 years). In another clinical study, elderly volunteers (aged 71 through 81 years) were given tolterodine immediate release 2 or 4 mg (1 or 2 mg bid). Mean serum concentrations of tolterodine and 5-HMT in these elderly volunteers were approximately 20% and 50% higher, respectively, than concentrations reported in young healthy volunteers. However, no overall differences were observed in safety between older and younger

patients on tolterodine in the Phase 3, 12-week, controlled clinical studies; therefore, no tolterodine dosage adjustment for elderly patients is recommended.

8.6 Renal Impairment

Renal impairment can significantly alter the disposition of tolterodine immediate release and its metabolites. In a study conducted in patients with creatinine clearance between 10 and 30 mL/min, tolterodine and 5-HMT levels were approximately 2–3 fold higher in patients with renal impairment than in healthy volunteers. Exposure levels of other metabolites of tolterodine (e.g., tolterodine acid, *N*-dealkylated tolterodine acid, *N*-dealkylated tolterodine and *N*-dealkylated hydroxy tolterodine) were significantly higher (10–30 fold) in renally impaired patients as compared to the healthy volunteers. The recommended dose for patients with severe renal impairment (CCr: 10-30 mL/min) is DETROL LA 2 mg daily. Patients with CCr<10 mL/min have not been studied and use of DETROL LA in this population is not recommended [see **DOSAGE AND ADMINISTRATION (2.2)** and **WARNINGS and PRECAUTIONS (5.5)**]. DETROL LA has not been studied in patients with mild to moderate renal impairment [CCr 30-80 mL/min].

8.7 Hepatic Impairment

Liver impairment can significantly alter the disposition of tolterodine immediate release. In a study of tolterodine immediate release conducted in cirrhotic patients (Child-Pugh Class A and B), the elimination half-life of tolterodine immediate release was longer in cirrhotic patients (mean, 7.8 hours) than in healthy, young, and elderly volunteers (mean, 2 to 4 hours). The clearance of orally administered tolterodine immediate release was substantially lower in cirrhotic patients (1.0 ± 1.7 L/h/kg) than in the healthy volunteers (5.7 ± 3.8 L/h/kg). The recommended dose for patients with mild to moderate hepatic impairment (Child-Pugh Class A or B) is DETROL LA 2 mg once daily. DETROL LA is not recommended for use in patients with severe hepatic impairment (Child-Pugh Class C) [see **DOSAGE AND ADMINISTRATION (2.2)** and **WARNINGS AND PRECAUTIONS (5.4)**].

8.8 Gender

The pharmacokinetics of tolterodine immediate release and 5-HMT are not influenced by gender. Mean C_{max} of tolterodine immediate release (1.6 µg/L in males versus 2.2 µg/L in females) and the active 5-HMT (2.2 µg/L in males versus 2.5 µg/L in females) are similar in males and females who were administered tolterodine immediate release 2 mg. Mean AUC values of tolterodine (6.7 µg·h/L in males versus 7.8 µg·h/L in females) and 5-HMT (10 µg·h/L in males versus 11 µg·h/L in females) are also similar. The elimination half-life of tolterodine immediate release for both males and females is 2.4 hours, and the half-life of 5-HMT is 3.0 hours in females and 3.3 hours in males.

8.9 Race

Pharmacokinetic differences due to race have not been established.

10 OVERDOSAGE

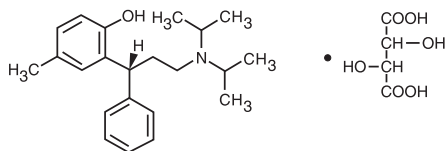
Overdosage with DETROL LA Capsules can potentially result in severe central anticholinergic effects and should be treated accordingly.

ECG monitoring is recommended in the event of overdosage. In dogs, changes in the QT interval (slight prolongation of 10% to 20%) were observed at a suprapharmacologic dose of 4.5 mg/kg, which is about 68 times higher than the recommended human dose. In clinical trials of normal volunteers and patients, QT interval prolongation was observed with tolterodine immediate release at doses up to 8 mg (4 mg bid) and higher doses were not evaluated [see **WARNINGS AND PRECAUTIONS (5.6)** and **CLINICAL PHARMACOLOGY (12.2)**].

A 27-month-old child who ingested 5 to 7 tolterodine immediate release 2 mg tablets was treated with a suspension of activated charcoal and was hospitalized overnight with symptoms of dry mouth. The child fully recovered.

11 DESCRIPTION

DETROL LA Capsules contain tolterodine tartrate. The active moiety, tolterodine, is a muscarinic receptor antagonist. The chemical name of tolterodine tartrate is (R)-N, N-diisopropyl-3-(2-hydroxy-5-methylphenyl)-3-phenylpropanamine L-hydrogen tartrate. The empirical formula of tolterodine tartrate is $C_{26}H_{37}NO_7$. Its structure is:



Tolterodine tartrate is a white, crystalline powder with a molecular weight of 475.6. The pK_a value is 9.87 and the solubility in water is 12 mg/mL. It is soluble in methanol, slightly soluble in ethanol, and practically insoluble in toluene. The partition coefficient (Log D) between n-octanol and water is 1.83 at pH 7.3.

DETROL LA 4 mg capsule for oral administration contains 4 mg of tolterodine tartrate. Inactive ingredients are sucrose, starch, hypromellose, ethylcellulose, medium chain triglycerides, oleic acid, gelatin, and FD&C Blue #2.

DETROL LA 2 mg capsule for oral administration contains 2 mg of tolterodine tartrate, and the following inactive ingredients: sucrose, starch, hypromellose, ethylcellulose, medium chain triglycerides, oleic acid, gelatin, yellow iron oxide, and FD&C Blue #2.

Both the 2 mg and 4 mg capsule strengths are imprinted with a pharmaceutical grade printing ink that contains shellac glaze, titanium dioxide, propylene glycol, and simethicone.

12 CLINICAL PHARMACOLOGY

12.1 Mechanism of Action

Tolterodine acts as a competitive antagonist of acetylcholine at postganglionic muscarinic receptors. Both urinary bladder contraction and salivation are mediated via cholinergic muscarinic receptors.

After oral administration, tolterodine is metabolized in the liver, resulting in the formation of 5-hydroxymethyl tolterodine (5-HMT), the major pharmacologically active metabolite. 5-HMT, which exhibits an antimuscarinic activity similar to that of tolterodine, contributes significantly to the therapeutic effect. Both tolterodine and 5-HMT exhibit a high specificity for muscarinic receptors, since both show negligible activity or affinity for other neurotransmitter receptors and other potential cellular targets, such as calcium channels.

12.2 Pharmacodynamics

Tolterodine has a pronounced effect on bladder function. Effects on urodynamic parameters before and 1 and 5 hours after a single 6.4-mg dose of tolterodine immediate release were determined in healthy volunteers. The main effects of tolterodine at 1 and 5 hours were an increase in residual urine, reflecting an incomplete emptying of the bladder, and a decrease in detrusor pressure. These findings are consistent with an antimuscarinic action on the lower urinary tract.

Cardiac Electrophysiology

The effect of 2 mg BID and 4 mg BID of DETROL immediate release (tolterodine IR) tablets on the QT interval was evaluated in a 4-way crossover, double-blind, placebo- and active-controlled (moxifloxacin 400 mg QD) study in healthy male (N=25) and female (N=23) volunteers aged 18–55 years. Study subjects [approximately equal representation of CYP2D6 extensive metabolizers (EMs) and poor metabolizers (PMs)] completed sequential 4-day periods of dosing with moxifloxacin 400 mg QD, tolterodine 2 mg BID, tolterodine 4 mg BID, and placebo. The 4 mg BID dose of tolterodine IR (two times the highest recommended dose) was chosen because this dose results in tolterodine exposure similar to that observed upon coadministration of tolterodine 2 mg BID with potent CYP3A4 inhibitors in patients who are CYP2D6 poor metabolizers [see **DRUG INTERACTIONS (7.2)**]. QT interval was measured over a 12-hour period following dosing, including the time of peak plasma concentration (T_{max}) of tolterodine and at steady state (Day 4 of dosing).

Table 2 summarizes the mean change from baseline to steady state in corrected QT interval (QT_c) relative to placebo at the time of peak tolterodine (1 hour) and moxifloxacin (2 hour) concentrations. Both Fridericia's (QT_cF) and a population-specific (QT_cP) method were used to correct QT interval for heart rate. No single QT correction method is known to be more valid than others. QT interval was measured manually and by machine, and data from both are presented. The mean increase of heart rate associated with a 4 mg/day dose of tolterodine in this study was 2.0 beats/minute and 6.3 beats/minute with 8 mg/day tolterodine. The change in heart rate with moxifloxacin was 0.5 beats/minute.

Table 2. Mean (CI) change in QT_c from baseline to steady state (Day 4 of dosing) at T_{max} (relative to placebo)

Drug/Dose	N	QT_cF (msec) (manual)	QT_cF (msec) (machine)	QT_cP (msec) (manual)	QT_cP (msec) (machine)
Tolterodine 2 mg BID*	48	5.01 (0.28, 9.74)	1.16 (-2.99, 5.30)	4.45 (-0.37, 9.26)	2.00 (-1.81, 5.81)
Tolterodine 4 mg BID*	48	11.84 (7.11, 16.58)	5.63 (1.48, 9.77)	10.31 (5.49, 15.12)	8.34 (4.53, 12.15)
Moxifloxacin 400 mg QD †	45	19.26‡ (15.49, 23.03)	8.90 (4.77, 13.03)	19.10‡ (15.32, 22.89)	9.29 (5.34, 13.24)

*At T_{max} of 1 hr; 95% Confidence Interval.

†At T_{max} of 2 hr; 90% Confidence Interval.

‡The effect on QT interval with 4 days of moxifloxacin dosing in this QT trial may be greater than typically observed in QT trials of other drugs.

The reason for the difference between machine and manual read of QT interval is unclear. The QT effect of tolterodine immediate release tablets appeared greater for 8 mg/day (two times the therapeutic dose) compared to 4 mg/day. The effect of tolterodine 8 mg/day was not as large as that observed after four days of therapeutic dosing with the active control moxifloxacin. However, the confidence intervals overlapped.

Tolterodine's effect on QT interval was found to correlate with plasma concentration of tolterodine. There appeared to be a greater QT_c interval increase in CYP2D6 poor metabolizers than in CYP2D6 extensive metabolizers after tolterodine treatment in this study.

This study was not designed to make direct statistical comparisons between drugs or dose levels. There has been no association of Torsade de Pointes in the international post-marketing experience with DETROL or DETROL LA [see **WARNINGS and PRECAUTIONS (5.6)**].

12.3 Pharmacokinetics

Absorption: In a study with ^{14}C -tolterodine solution in healthy volunteers who received a 5-mg oral dose, at least 77% of the radiolabeled dose was absorbed. C_{max} and area under the concentration-time curve (AUC) determined after dosage of tolterodine immediate release are dose-proportional over the range of 1 to 4 mg. Based on the sum of unbound serum concentrations of tolterodine and 5-HMT ("active moiety"), the AUC of tolterodine extended release 4 mg daily is equivalent to tolterodine immediate release 4 mg (2 mg bid). C_{max} and C_{min} levels of tolterodine extended release are about 75% and 150% of tolterodine immediate release, respectively. Maximum serum concentrations of tolterodine extended release are observed 2 to 6 hours after dose administration.

Effect of Food: There is no effect of food on the pharmacokinetics of tolterodine extended release.

Distribution: Tolterodine is highly bound to plasma proteins, primarily α_1 -acid glycoprotein. Unbound concentrations of tolterodine average $3.7\% \pm 0.13\%$ over the concentration range achieved in clinical studies. 5-HMT is not extensively protein bound, with unbound fraction concentrations averaging $36\% \pm 4.0\%$. The blood to serum ratio of tolterodine and 5-HMT averages 0.6 and 0.8, respectively, indicating that these compounds do not distribute extensively into erythrocytes. The volume of distribution of tolterodine following administration of a 1.28-mg intravenous dose is 113 ± 26.7 L.

Metabolism: Tolterodine is extensively metabolized by the liver following oral dosing. The primary metabolic route involves the oxidation of the 5-methyl group and is mediated by the cytochrome P450 2D6 (CYP2D6) and leads to the formation of a pharmacologically active metabolite, 5-HMT. Further metabolism leads to formation of the 5-carboxylic acid and *N*-dealkylated 5-carboxylic acid metabolites, which account for $51\% \pm 14\%$ and $29\% \pm 6.3\%$ of the metabolites recovered in the urine, respectively.

Variability in Metabolism: A subset of individuals (approximately 7% of Caucasians and approximately 2% of African Americans) are poor metabolizers for CYP2D6, the enzyme responsible for the formation of 5-HMT from tolterodine. The identified pathway of metabolism for these individuals ("poor metabolizers") is dealkylation via cytochrome P450 3A4 (CYP3A4) to *N*-dealkylated tolterodine. The remainder of the population is referred to as "extensive metabolizers." Pharmacokinetic studies revealed that tolterodine is metabolized at a slower rate in poor metabolizers than in extensive metabolizers; this results in significantly higher serum concentrations of tolterodine and in negligible concentrations of 5-HMT.

Excretion: Following administration of a 5-mg oral dose of ¹⁴C-tolterodine solution to healthy volunteers, 77% of radioactivity was recovered in urine and 17% was recovered in feces in 7 days. Less than 1% (<2.5% in poor metabolizers) of the dose was recovered as intact tolterodine, and 5% to 14% (<1% in poor metabolizers) was recovered as 5-HMT. A summary of mean (± standard deviation) pharmacokinetic parameters of tolterodine extended release and 5-HMT in extensive (EM) and poor (PM) metabolizers is provided in Table 3. These data were obtained following single and multiple doses of tolterodine extended release administered daily to 17 healthy male volunteers (13 EM, 4 PM).

Table 3 Summary of Mean (±SD) Pharmacokinetic Parameters of Tolterodine Extended Release and its Active Metabolite (5-Hydroxymethyl Tolterodine) in Healthy Volunteers

	Tolterodine				5-Hydroxymethyl Tolterodine			
	t _{max} [*] (h)	C _{max} (µg/L)	C _{avg} (µg/L)	t _{1/2} (h)	t _{max} [*] (h)	C _{max} (µg/L)	C _{avg} (µg/L)	t _{1/2} (h)
Single dose 4 mg [†]								
EM	4(2-6)	1.3(0.8)	0.8(0.57)	8.4(3.2)	4(3-6)	1.6(0.5)	1.0(0.32)	8.8(5.9)
Multiple dose 4 mg								
EM	4(2-6)	3.4(4.9)	1.7(2.8)	6.9(3.5)	4(2-6)	2.7(0.90)	1.4(0.6)	9.9(4.0)
PM	4(3-6)	19(16)	13(11)	18(16)	— [‡]	—	—	—

C_{max} = Maximum serum concentration; t_{max} = Time of occurrence of C_{max};
C_{avg} = Average serum concentration; t_{1/2} = Terminal elimination half-life.

*Data presented as median (range).

[†]Parameter dose-normalized from 8 to 4 mg for the single-dose data.

[‡] = not applicable.

Drug Interactions:

Potent CYP2D6 inhibitors: Fluoxetine is a selective serotonin reuptake inhibitor and a potent inhibitor of CYP2D6 activity. In a study to assess the effect of fluoxetine on the pharmacokinetics of tolterodine immediate release and its metabolites, it was observed that fluoxetine significantly inhibited the metabolism of tolterodine immediate release in extensive metabolizers, resulting in a 4.8-fold increase in tolterodine AUC. There was a 52% decrease in C_{max} and a 20% decrease in AUC of 5-hydroxymethyl tolterodine (5-HMT, the pharmacologically active metabolite of tolterodine). Fluoxetine thus alters the pharmacokinetics in patients who would otherwise be CYP2D6 extensive metabolizers of tolterodine immediate release to resemble the pharmacokinetic profile in poor metabolizers. The sums of unbound serum concentrations of tolterodine immediate release and 5-HMT are only 25% higher during the interaction. No dose adjustment is required when tolterodine and fluoxetine are co-administered.

Potent CYP3A4 inhibitors: The effect of a 200-mg daily dose of ketoconazole on the pharmacokinetics of tolterodine immediate release was studied in 8 healthy volunteers, all of whom were CYP2D6 poor metabolizers. In the presence of ketoconazole, the mean C_{max} and AUC of tolterodine increased by 2- and 2.5-fold, respectively. Based on these findings, other potent CYP3A4 inhibitors may also lead to increases of tolterodine plasma concentrations.

For patients receiving ketoconazole or other potent CYP3A4 inhibitors such as itraconazole, miconazole, clarithromycin, ritonavir, the recommended dose of DETROL LA is 2 mg daily [see **DOSE AND ADMINISTRATION**(2.3)].

Warfarin: In healthy volunteers, coadministration of tolterodine immediate release 4 mg (2 mg bid) for 7 days and a single dose of warfarin 25 mg on day 4 had no effect on prothrombin time, Factor VII suppression, or on the pharmacokinetics of warfarin.

Oral Contraceptives: Tolterodine immediate release 4 mg (2 mg bid) had no effect on the pharmacokinetics of an oral contraceptive (ethinyl estradiol 30 µg/levo-norgestrel 150 µg) as evidenced by the monitoring of ethinyl estradiol and levo-norgestrel over a 2-month period in healthy female volunteers.

Diuretics: Coadministration of tolterodine immediate release up to 8 mg (4 mg bid) for up to 12 weeks with diuretic agents, such as indapamide, hydrochlorothiazide, triamterene, bendroflumethiazide, chlorothiazide, methylchlorothiazide, or furosemide, did not cause any adverse electrocardiographic (ECG) effects.

Effect of tolterodine on other drugs metabolized by Cytochrome P450 enzymes: Tolterodine immediate release does not cause clinically significant interactions with other drugs metabolized by the major drug-metabolizing CYP enzymes. *In vivo* drug-interaction data show that tolterodine immediate release does not result in clinically relevant inhibition of CYP1A2, 2D6, 2C9, 2C19, or 3A4 as evidenced by lack of influence on the marker drugs caffeine, debrisoquine, S-warfarin, and omeprazole. *In vitro* data show that tolterodine immediate release is a competitive inhibitor of CYP2D6 at high concentrations (K_i 1.05 µM), while tolterodine immediate release as well as the 5-HMT are devoid of any significant inhibitory potential regarding the other isoenzymes.

13 NONCLINICAL TOXICOLOGY

13.1 Carcinogenesis, Mutagenesis, Impairment of Fertility

Carcinogenicity studies with tolterodine were conducted in mice and rats. At the maximum tolerated dose in mice (30 mg/kg/day), female rats (20 mg/kg/day), and male rats (30 mg/kg/day), exposure margins were approximately 6-9 times, 7 times, and 11 times

the clinical exposure to the pharmacologically active components of DETROL® LA (based on AUC of tolterodine and its 5-HMT metabolite). At these exposure margins, no increase in tumors was found in either mice or rats.

No mutagenic or genotoxic effects of tolterodine were detected in a battery of *in vitro* tests, including bacterial mutation assays (Ames test) in 4 strains of *Salmonella typhimurium* and in 2 strains of *Escherichia coli*, a gene mutation assay in L5178Y mouse lymphoma cells, and chromosomal aberration tests in human lymphocytes. Tolterodine was also negative *in vivo* in the bone marrow micronucleus test in the mouse.

In female mice treated for 2 weeks before mating and during gestation with 20 mg/kg/day (about 9-12 times the clinical exposure via AUC), neither effects on reproductive performance or fertility were seen. In male mice, a dose of 30 mg/kg/day did not induce any adverse effects on fertility.

14 CLINICAL STUDIES

DETROL LA Capsules 2 mg were evaluated in 29 patients in a Phase 2 dose-effect study. DETROL LA 4 mg was evaluated for the treatment of overactive bladder with symptoms of urge urinary incontinence and frequency in a randomized, placebo-controlled, multicenter, double-blind, Phase 3, 12-week study. A total of 507 patients received DETROL LA 4 mg once daily in the morning and 508 received placebo. The majority of patients were Caucasian (95%) and female (81%), with a mean age of 61 years (range, 20 to 93 years). In the study, 642 patients (42%) were 65 to 93 years of age. The study included patients known to be responsive to tolterodine immediate release and other anticholinergic medications, however, 47% of patients never received prior pharmacotherapy for overactive bladder. At study entry, 97% of patients had at least 5 urge incontinence episodes per week and 91% of patients had 8 or more micturitions per day.

The primary efficacy assessment was change in mean number of incontinence episodes per week at week 12 from baseline. Secondary efficacy measures included change in mean number of micturitions per day and mean volume voided per micturition at week 12 from baseline.

Patients treated with DETROL LA experienced a statistically significant decrease in number of urinary incontinence per week from baseline to last assessment (week 12) compared with placebo as well as a decrease in the average daily urinary frequency and an increase in the average urine volume per void.

Mean change from baseline in weekly incontinence episodes, urinary frequency, and volume voided between placebo and DETROL LA are summarized in Table 4.

Table 4. 95% Confidence Intervals (CI) for the Difference between DETROL LA (4 mg daily) and Placebo for Mean Change at Week 12 from Baseline*

	DETROL LA (n=507)	Placebo (n=508) †	Treatment Difference, vs. Placebo (95% CI)
Number of incontinence episodes/ week	22.1	23.3	-4.8 ‡
Mean Baseline	-11.8 (SD 17.8)	-6.9 (SD 15.4)	(-6.9, -2.8)
Mean Change from Baseline			
Number of micturitions/day	10.9	11.3	-0.6 ‡
Mean Baseline	-1.8 (SD 3.4)	-1.2 (SD 2.9)	(-1.0, -0.2)
Mean Change from Baseline			
Volume voided per micturition (mL)	141	136	20 ‡
Mean Baseline	34 (SD 51)	14 (SD 41)	(14, 26)
Mean Change from Baseline			

SD = Standard Deviation.

* Intent-to-treat analysis.

† 1 to 2 patients missing in placebo group for each efficacy parameter.

‡ The difference between DETROL LA and placebo was statistically significant.

16 HOW SUPPLIED/STORAGE AND HANDLING

DETROL LA Capsules are supplied as follows:

Bottles of 30		Bottles of 500	
2 mg Capsules	NDC 0009-5190-01	2 mg Capsules	NDC 0009-5190-03
4 mg Capsules	NDC 0009-5191-01	4 mg Capsules	NDC 0009-5191-03

Bottles of 90		Unit Dose Blisters	
2 mg Capsules	NDC 0009-5190-02	2 mg Capsules	NDC 0009-5190-04
4 mg Capsules	NDC 0009-5191-02	4 mg Capsules	NDC 0009-5191-04

Store at 20°–25°C (68°–77°F); excursions permitted to 15°–30°C (59°–86°F) [see USP Controlled Room Temperature]. Protect from light.

17 PATIENT COUNSELING INFORMATION

See *FDA-Approved Patient Labeling* (17.2).

17.1 Information for Patients

Patients should be informed that antimuscarinic agents such as DETROL LA may produce the following effects: blurred vision, dizziness, or drowsiness. Patients should be advised to exercise caution in decisions to engage in potentially dangerous activities until the drug's effects have been determined.

17.2 FDA Approved Patient Labeling

Rx only



Distributed by

Pharmacia & Upjohn Company

Division of Pfizer Inc, NY, NY 10017

LAB-0256-7.0

Revised December 2009

PATIENT INFORMATION

DETROL® LA (DE-trol el-ay)

(tolterodine tartrate extended release capsules)

Read the Patient Information that comes with DETROL LA before you start using it and each time you get a refill. There may be new information. This leaflet does not take the place of talking with your doctor about your condition or your treatment. Only your doctor can determine if treatment with DETROL LA is right for you.

What is DETROL LA?

DETROL LA is a prescription medicine for **adults** used to treat the following symptoms due to a condition called **overactive bladder**:

- having a strong need to urinate with leaking or wetting accidents (urge urinary incontinence)
- having a strong need to urinate right away (urgency)
- having to urinate often (frequency)

DETROL LA did not help the symptoms of overactive bladder when studied in children.

What is overactive bladder?

Overactive bladder happens when you cannot control your bladder muscle. When the muscle contracts too often or cannot be controlled, you get symptoms of overactive bladder, which are leakage of urine (urge urinary incontinence), needing to urinate right away (urgency), and needing to urinate often (frequency).

Who should not take DETROL LA?

Do not take DETROL LA if:

- you have trouble emptying your bladder (also called “urinary retention”)
- your stomach empties slowly (also called “gastric retention”)
- you have an eye problem called “uncontrolled narrow-angle glaucoma”
- you are allergic to DETROL LA or to any of its ingredients. See the end of this leaflet for a complete list of ingredients

What should I tell my doctor before starting DETROL LA?

Before starting DETROL LA, tell your doctor about all of your medical conditions, including if you:

- have any stomach or intestinal problems
- have trouble emptying your bladder or you have a weak urine stream
- have an eye problem called narrow-angle glaucoma
- have liver problems
- have kidney problems
- have a condition called myasthenia gravis
- or any family members have a rare heart condition called QT prolongation (long QT syndrome)
- are pregnant or trying to become pregnant. It is not known if DETROL LA could harm your unborn baby
- are breastfeeding. It is not known if DETROL LA passes into your milk and if it can harm your child

Tell your doctor about all the medicines you take, including prescription and non-prescription medicines, vitamins and herbal supplements. Other drugs can affect how your body handles DETROL LA. Your doctor may use a lower dose of DETROL LA if you are taking:

- Certain medicines for fungus or yeast infections such as Nizoral® (ketoconazole), Sporanox® (itraconazole), or Monistat® (miconazole)
- Certain medicines for bacteria infections such as Biaxin® (clarithromycin)
- Certain medicines for treatment of HIV infection such as Norvir® (ritonavir), Invirase® (saquinavir), Reyataz® (atazanavir)
- Sandimmune® (cyclosporine) or Velban® (vinblastine)

Know the medicines you take. Keep a list of them with you to show your doctor or pharmacist each time you get a new medicine.

How should I take DETROL LA?

- Take DETROL LA exactly as prescribed. Your doctor will prescribe the dose that is right for you. Do not change your dose unless told to do so by your doctor.
- Take DETROL LA capsules once a day with liquid. Swallow the whole capsule. Tell your doctor if you cannot swallow a capsule.
- DETROL LA can be taken with or without food.
- Take DETROL LA the same time each day.
- If you miss a dose of DETROL LA, begin taking DETROL LA again the next day. Do not take 2 doses of DETROL LA in the same day.
- If you took more than your prescribed dose of DETROL LA, call your doctor, or poison control center, or go to the hospital emergency room.

What are possible side effects of DETROL LA?

The most common side effects with DETROL LA are:

- dry mouth • constipation
- headache • stomach pain

Medicines like DETROL LA can cause blurred vision, dizziness, or drowsiness.

Use caution while driving or doing other dangerous activities until you know how DETROL LA affects you.

Call your doctor for medical advice about side effects. You may report side effects to the FDA at 1-800-FDA-1088.

These are not all the side effects with DETROL LA. For a complete list, ask your doctor or pharmacist.

How do I store DETROL LA?

- Store DETROL LA at room temperature, 68° - 77°F (20° - 25°C); brief periods permitted between 59° - 86°F (15° - 30°C). Protect from light. Keep in a dry place.
- **Keep DETROL LA and all medicines out of the reach of children.**

General Information about DETROL LA

Medicines are sometimes prescribed for conditions that are not in the patient information leaflet. Only use DETROL LA the way your doctor tells you. Do not share it with other people even if they have the same symptoms you have. It may harm them.

This leaflet summarizes the most important information about DETROL LA. If you would like more information, talk with your doctor. You can ask your doctor or pharmacist for information about DETROL LA that is written for health professionals. You can also visit www.DETROLLA.com on the Internet, or call 1-888-4-DETROL (1-888-433-8765).

What are the ingredients in DETROL LA?

Active ingredients: tolterodine tartrate

Inactive ingredients: sucrose, starch, hypromellose, ethylcellulose, medium chain triglycerides, oleic acid, gelatin, and FD&C Blue #2. 2 mg capsule also contains yellow iron oxide. Capsules have pharmaceutical grade printing ink that contains shellac glaze, titanium dioxide, propylene glycol, and simethicone.

Distributed by:



Pharmacia & Upjohn
Division of Pfizer Inc, NY, NY 10017

December 2009

LAB-0312-4.0

Registered trademarks are the property of their respective owners.